

Figure 12. Catlettsburg dip section. Vertical lines represent subsurface data; datum is sea level.

CATLETTSBURG DIP SECTION

NW Ohio West Virginia Virginia SE

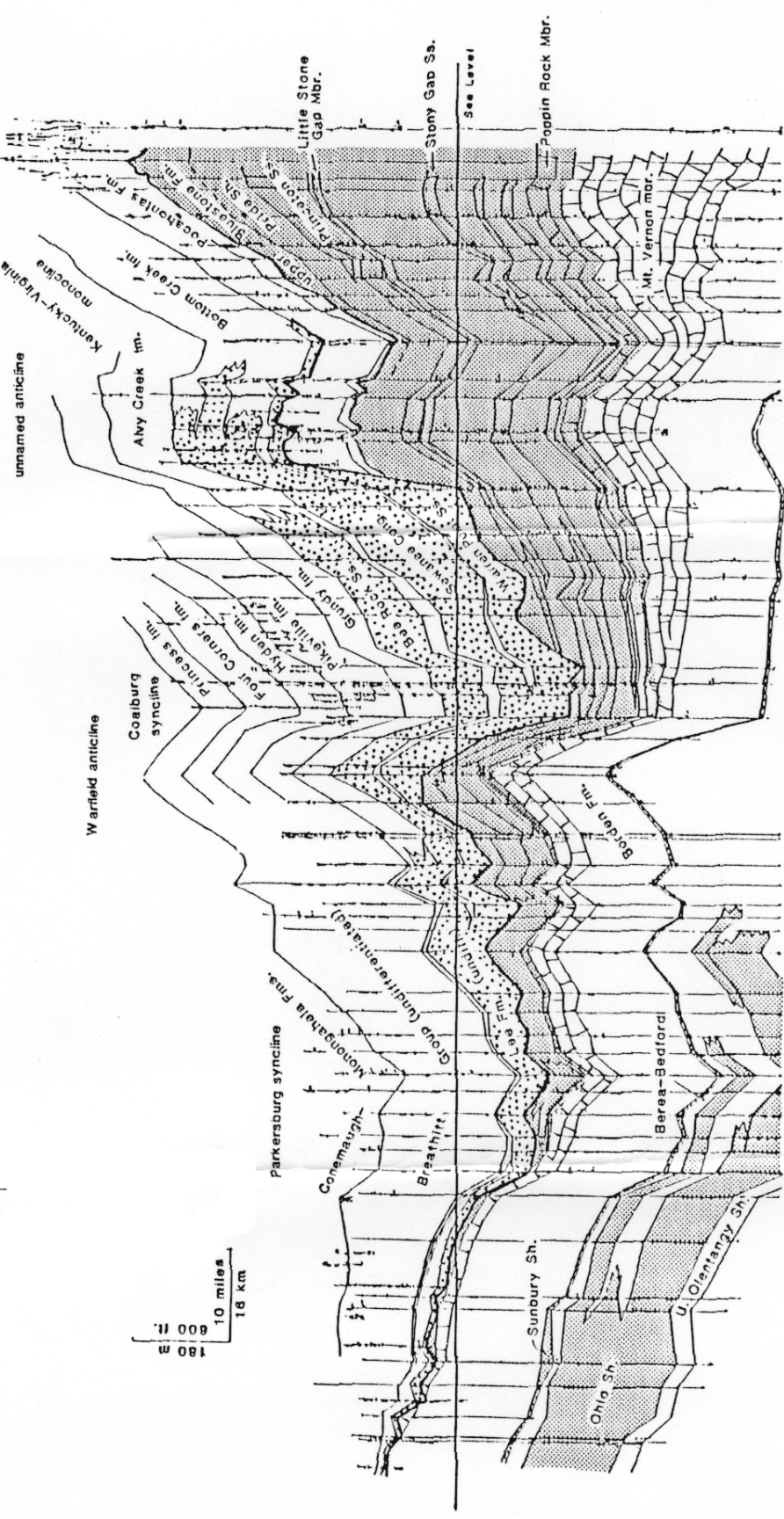


Figure 13. Grundy dip section. Vertical lines represent subsurface data; jagged lines represent topography; datum is sea level.

GRUNDY DIP SECTION

NW

Kentucky | Virginia

SE

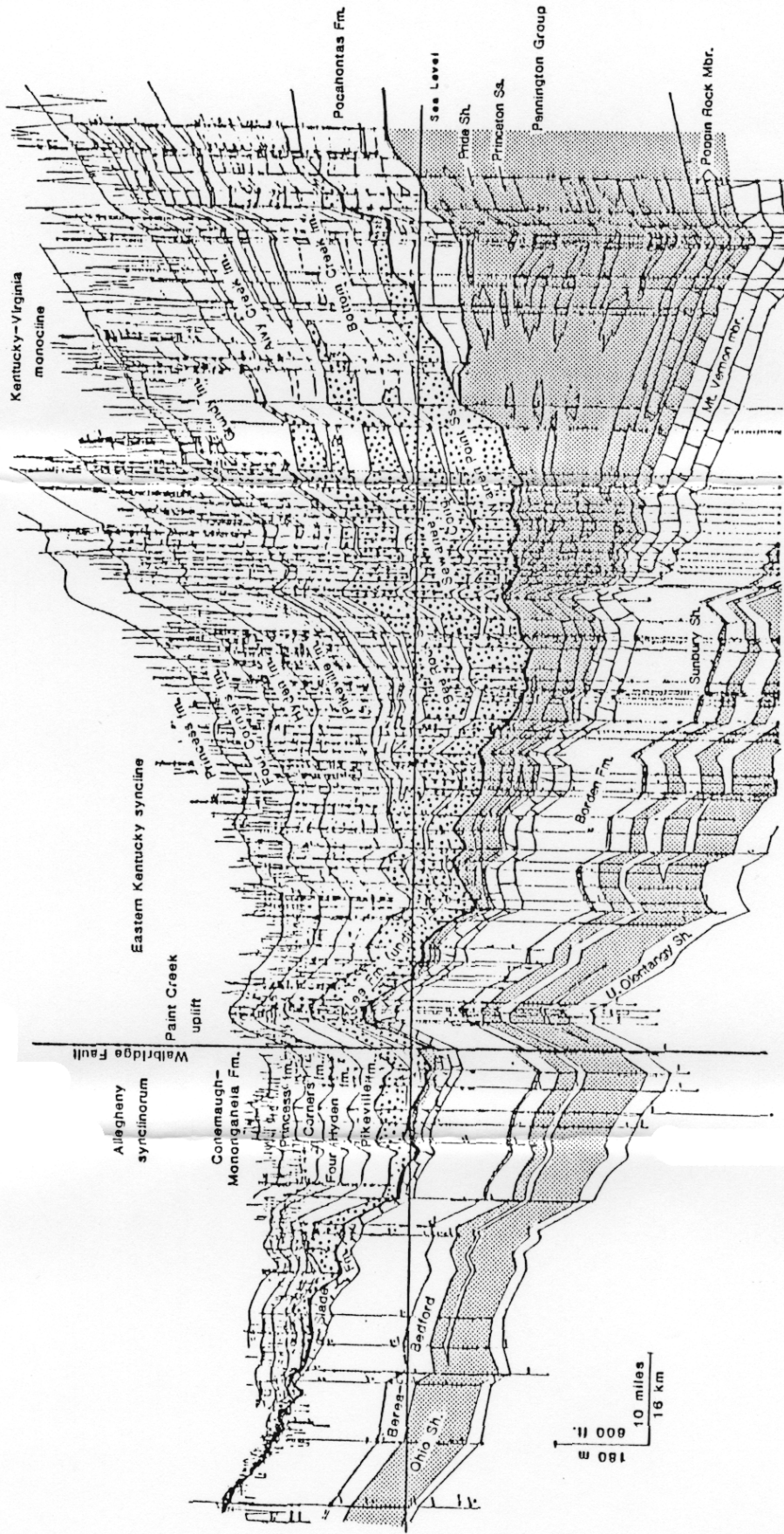
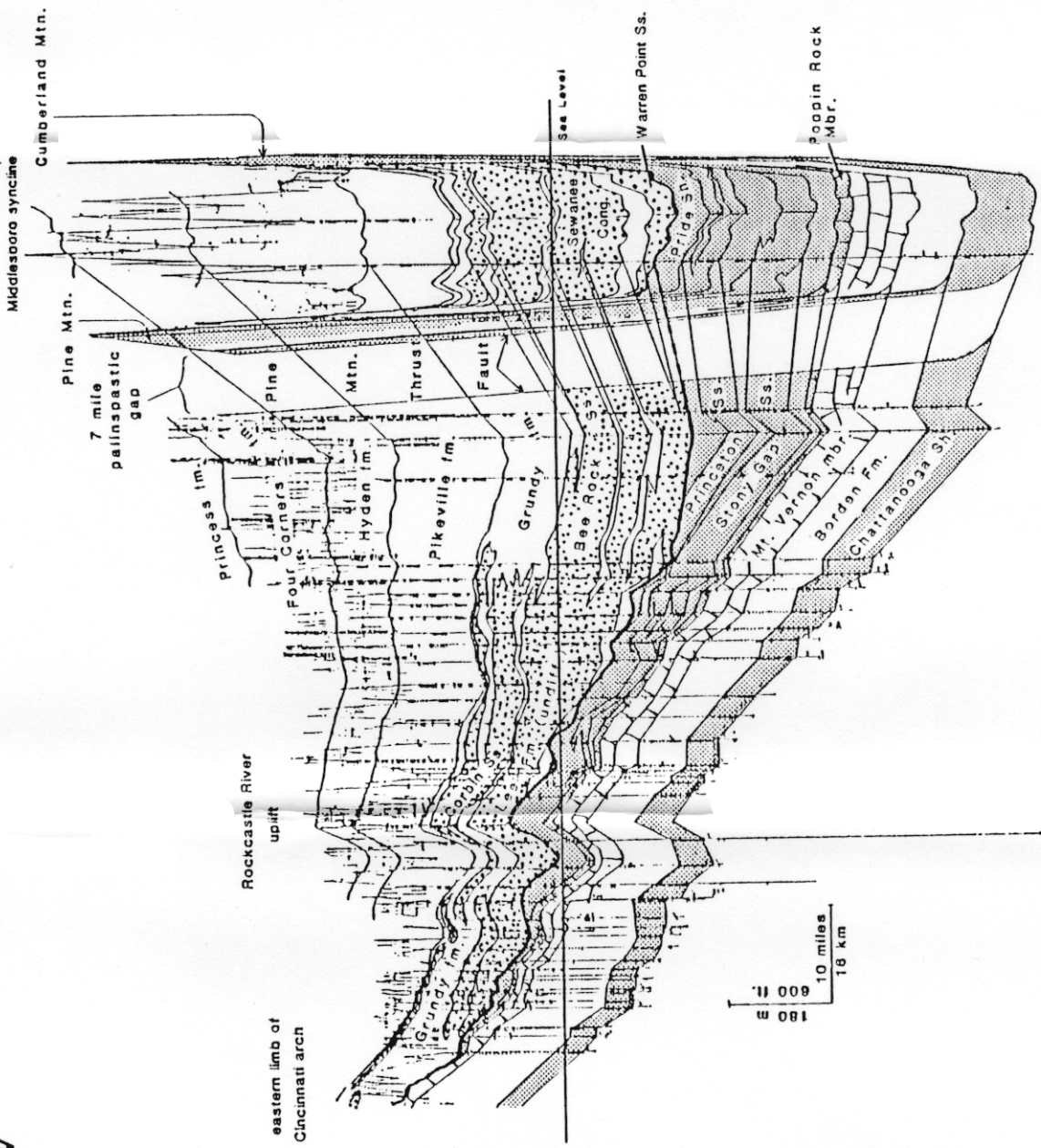


Figure 14. Booneville dip section. Vertical lines represent subsurface data; jagged lines represent topography; datum is sea level.

BOONEVILLE DIP SECTION

Kentucky Virginia SE

NW



Middleboro syncline

Cumberland Mtn.

Pine Mtn.

7 mile palinspastic gap

princess lm.

Rockcastle River uplift

eastern limb of Cincinnati arch

Four Corners

Hyde lm.

Pikeville lm.

Grundy lm.

Bee Rock Ss.

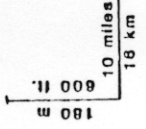
Pincaton Ss.

Stoney Gap Ss.

Mt. Vernon mbr.

Borden Fm.

Chattanooga Sh.



See Level

Warren Point Ss.

Poppin Rock Mbr.